

Name of the Student : \_\_\_\_\_ Roll No.: 

Name of the School : \_\_\_\_\_ Date : \_\_\_\_\_

Class : \_\_\_\_\_ Subject: Science Time: 60 Min

**Instructions to the Candidate**

1. Each question carries 1 mark. There is no negative marking.
2. Separate Optical Mark Reader (OMR) Answer Sheet is supplied to you along with question paper booklet.
3. Read the questions carefully and fill in the circle corresponding to your answer. Fill in the circle Completely.
4. Rough work should be done only in the space provided in the Question Paper Booklet.
5. Return the OMR Answer sheet to the invigilator before leaving the examination hall.
6. You can carry the question paper with you after completing the examination.
7. Once you enter the examination hall, you are not permitted to leave till the end of the examination.

**IV Class Science**

1. A balanced diet is \_\_\_\_\_  
(A) A diet that contains all the nutrients in the right amount.  
(B) A diet that contains only carbohydrates  
(C) A diet that contains vitamins and proteins  
(D) Both 'A' and 'C'

2. Identify the mis-matched one.

	<b>Microbes</b>	<b>Diseases</b>
(A)	Virus	Polio, Corona
(B)	Bacteria	Common cold, Malaria
(C)	Fungi	Ringworm, Athlete's foot
(D)	Protozoa	Dysentery, Food poisoning

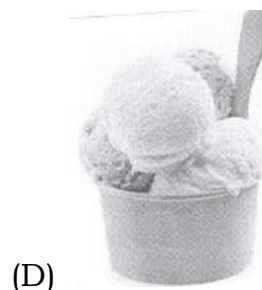
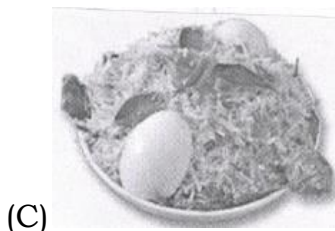
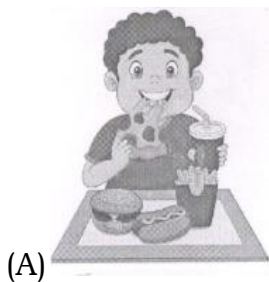
3. Fathima is a 10 year old girl. How many teeth is she likely to have?  
(A) 14                      (B) 28                      (C) 32                      (D) 20
4. Anita says "Carbohydrates give us energy" Sima says "Proteins are needed for the growth of our body"  
Nirmala says "Fats protect us from diseases". Who among the three is giving the incorrect statement?  
(A) Anita and Sima                      (B) Nirmala and sima  
(C) Anita and Nirmala                      (D) Only Nirmala

5. A group of four people made the following statements on water cycle.
- (I) Water gets heated and evaporates
  - (II) Clouds are made up of water vapour
  - (III) Plants and animals give out water vapour
  - (IV) The two processes evaporation and condensation take place continuously in a cycle.

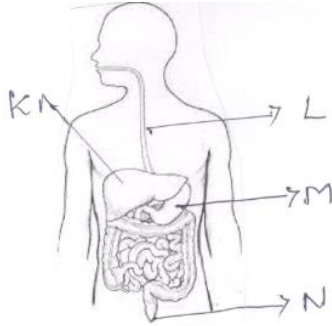
Who is/are correct?

- (A) I only
  - (B) II only
  - (C) I, II and IV
  - (D) All the above statements are correct
6. Which of the following is NOT true regarding the care of teeth?
- (A) Teeth get damaged by chewing food.
  - (B) We should not eat too many sweets.
  - (C) We should brush our teeth twice a day.
  - (D) We should eat fruits and vegetables.

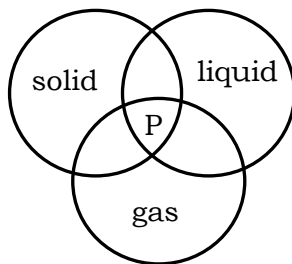
7. A man suffered from constipation. The doctor advised him to have lots of roughage and water. Which of these food groups should he take as per the doctor's advice?



8. The diagram shows the human digestive system. Which of the following is a sac like organ where food is broken down further?



- (A) K                      (B) L                      (C) M                      (D) N
9. Sumita found some insects on her clothes that were kept in a cupboard for six months. What should she do to keep insects away from the clothes?
- (A) Keep moth balls with clothes      (B) Keep dried Neem leaves with clothes  
(C) Keep silver fish with clothes      (D) Both (A) and (B)
10. Which of the following is NOT a type of tooth?
- (A) Crown                      (B) Incisor                      (C) Canine                      (D) Molar
11. Which of the following can be placed at 'P' in the Venn diagram given below?



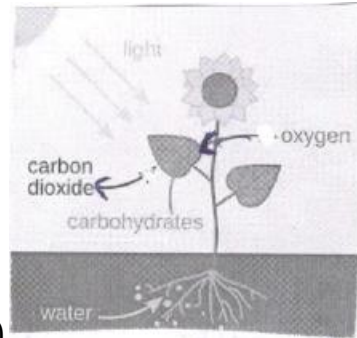
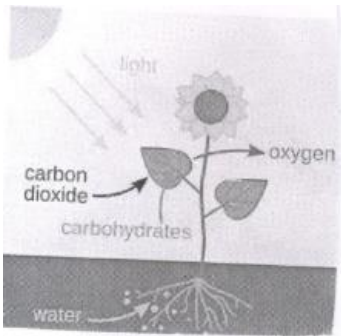
- (A) Water                      (B) Oxygen                      (C) Clay                      (D) Paper
12. Read the sentences carefully and choose the correct option:
- (A) Salt is an insoluble substance      (B) Sand is a soluble substance.  
(C) In a solution, soluble substances can be separated by filtration  
(D) Solute and solvent together forms a solution
13. Who needs to take more carbohydrates?
- (A) Doctor                      (B) Teacher                      (C) Rickshaw                      (D) Car driver

14. I hung my wet towel outside to dry in the sun. Name the process involved in drying
- (A) Condensation (B) Evaporation  
(C) Freezing (D) Melting
15. Pinky's father brought a big aquarium for their home. He wanted some real plants to grow inside the aquarium, so that the fish can get oxygen to breathe naturally. Which of these plants should be kept inside the aquarium?
- (A) Tape grass and pondweed (B) Lotus and water lily  
(C) Duckweed and water hyacinth (D) All the above
16. Match the following and identify the correct answer
- | <b>A</b>               | <b>B</b>                          |
|------------------------|-----------------------------------|
| (1) Incisors           | (a) Crushing and chewing the food |
| (2) Canines            | (b) Cutting and biting the food   |
| (3) Premolars          | (c) Chewing and grinding the food |
| (4) Molars             | (d) Tearing the food              |
| (A) 1→b, 2→a, 3→d, 4→c | (B) 1→c, 2→b, 3→a, 4→d            |
| (C) 1→b, 2→d, 3→a, 4→c | (D) 1→d, 2→c, 3→b, 4→a            |
17. The function of the excretory system correlates to which of the following closely?
- (A) Evaporation (B) Filtration  
(C) Condensation (D) Soil erosion
18. In the science lab, samples of solutions containing rice water, salt water, sugar water are given upon adding Iodine. One sample turned bluish black. Which is the one that turned bluish black?
- (A) Rice water (B) Sugar water  
(C) Salt water (D) Iodine
19. How is a zoo different from a forest?
- (i) It is a natural habitat (ii) It is an artificial habitat  
(iii) Animals are fed and taken care by the authorities  
(iv) Animals are wild
- (A) (i) and (iv) (B) (ii) and (iii) (C) (i) and (iii) (D) (iii) and (iv)

20. Though aquatic, unlike shark, why do whales and dolphins, come to the surface?

- (A) They breathe the atmospheric oxygen
- (B) They breathe dissolved oxygen
- (C) They find a mate
- (D) They lay eggs

21. Among the following, which picture is describing the process of photosynthesis correctly?



- (A) water
- (B) oxygen
- (C) A and B correct
- (D) A and B wrong.

22. Which of the following involves change of matter from liquid to solid?

- (A) Curdling of milk
- (B) Burning bricks in a kiln
- (C) Boiling of water
- (D) Blowing air into a balloon

23. Tara says 'Glucose is prepared food'

Dora says 'Starch is a stored food'

Whose statement is correct?

- (A) Only Tara's
- (B) Only Dora's
- (C) Both are correct
- (D) Both are wrong

24. Look at the picture and answer the following: Name the fluid the nurse is taking for testing.



- (A) Blood
- (B) Urine
- (C) Water
- (D) None of these

25. Which of the following is incorrect?

	<b>Nutrient</b>	<b>Example</b>
(A)	Carbohydrates	Fish
(B)	Proteins	Milk
(C)	Vitamins	Fruits and vegetables
(D)	Fats	Ghee and butter

26. The diagram below shows the stomata found on the underside of a leaf. Which of the following parts in the human body performs a function similar to that performed by the stomata?



- (A) Veins                      (B) Lungs                      (C) Stomata                      (D) Intestines

27. In what form does the potato plant store its extra food?

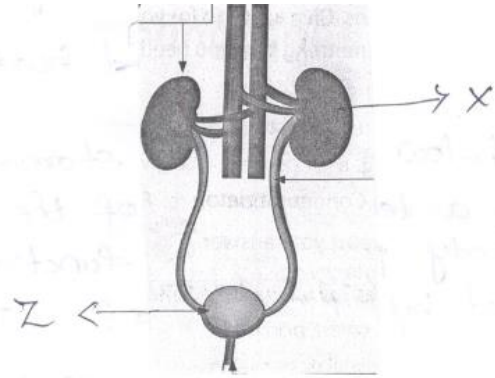
- (A) Protein                      (B) Glucose                      (C) Vitamin                      (D) Starch

28. Look at the picture carefully. Why does it have leaves in the shape of a container?



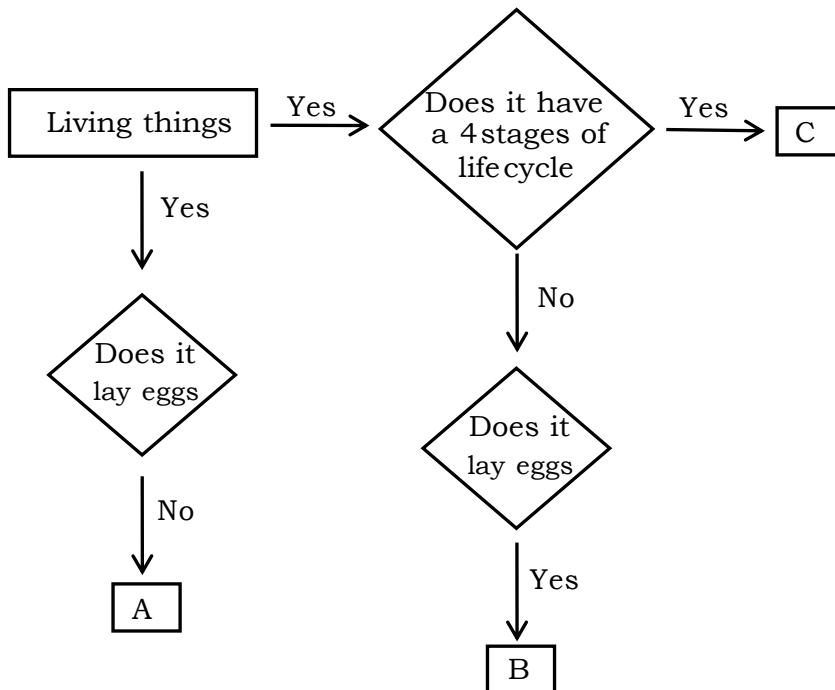
- (A) To take oxygen                      (B) To trap insects  
(C) To protect itself                      (D) None of these

29. Label the given diagram, by choosing the correct option



- (A) X – Kidneys, Z - Urethra                      (B) X – Bladder, Z – Ureters  
 (C) X – Kidneys, Z – Ureters                    (D) X – Kidneys, Z - Bladder

30.



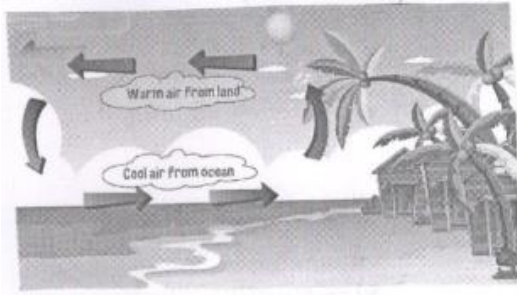
Study the above flow chart and choose the correct option.

- (A) A – Human, B – Hen, C – Butterfly  
 (B) A – Frog, B – Hen, C – Human  
 (C) A – Hen, B – Frog, C – Butterfly  
 (D) A – Butterfly, B – Human, C – Hen

31. Who was the first man to step on the Moon?

- (A) Neil Armstrong                                      (B) Rakesh Sharma  
 (C) Yuri Gagarin                                        (D) Kalpanachawla

32. Observe the given figure, carefully. What does it show?



- (A) Sea breeze (B) Land breeze  
(C) Mountain breeze (D) All the above

33. If a table is moved across the room, \_\_\_\_\_ is said to be done

- (A) Force (B) Energy (C) Work (D) Pull

34. \_\_\_\_\_ is the hottest planet of the solar system.

- (A) Earth (B) Mercury (C) Neptune (D) Venus

35. Four children grouped some plants, based on their habitats like areas of plain, heavy rain falls, mountains and deserts.

- Karthik : Neem, Peepal  
Jyothi : Pine, Fir  
Zoya : Rubber tree, teak tree  
Hanik : Coconut and babool

Who has grouped plants incorrectly?

- (A)Karthik (B)Jyothi (C)Zoya (D)Hanik

36. Class IV students were asked to make a list of some material fibres, but by mistake, they also listed some synthetic fibres. Remove the synthetic fibres from the given list of fibres.

Cotton, Nylon, Silk, polyester, wool, jute

- (A) Nylon and polyester (B) Nylon and polyester  
(C) Wool and polyester (D) Silk and jute.



37. Read the statements carefully and choose the correct option.

Statement – A: Albumen contains rich proteins

Statement – B: Egg yolk is rich in fats and proteins.

(A) Statement A is correct B is wrong.

(B) Statement B is correct A is wrong.

(C) Both the statements are correct.

(D) Both the statements are wrong.

38. Which of the following activities would need energy the most?

(A) Riding a bicycle up a hill                      (B) Walking.

(C) Riding a bicycle on a leveled ground.

(D) Doing homework.

39. Identify the given simple machine



(A) Pulley

(B) Lever

(C) Screw

(D) Wedge

40. Look at the picture. What kind of animals is it?



(A) Aquatic

(B) Aves

(C) Amphibian

(D) Mammal